

Built for
rough
terrain

**Nexen Rough Terrain
Forklift 1.8-5.0 ton**

2WD • Compact 4WD • 4WD



Nexen Rough Terrain Forklift Introduction

2WD

Strong flexibility
in rough terrain



100% differential lock.

4WD

Superior performance
in extreme conditions

Traditional technology while
imported key components:
DANA integrated trans-axle,
Sauer Danfoss hydrostatic
system, tilting cabin.



Compact 4WD

Nexen original
product replenished
Rough Terrain fields



V@^a^ä æ@^
f!&[}q^ä^ä æ^•ä

Nexen Rough Terrain Forklift Introduction

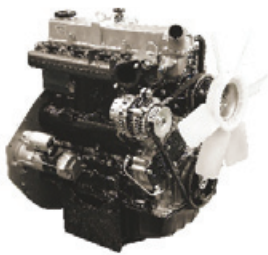
Engine

World renowned brands engine for superior performance.

MITSUBISHI S4S

Rated output 35.3kw/2250rpm >

Rated torque 182N.m/1800rpm >



YANMAR 4TNE98

Rated output 42.1kw/2300rpm >

Rated torque 196.3N.m/1700rpm >



PERKINS 1104C-44TA

Rated output 74.5kw/2300rpm >

Rated torque 415N.m/1350rpm >



Fully Isolated Cabin

A superior full floating overhead guard is installed with rubber damping instead of the traditional rigid design. This greatly reduces machine vibration and offers a smoother ride over rough terrain and reduces operator fatigue.



Wide-view Mast

Wide-view mast provides excellent through-the-mast visibility improving the work efficiency and allowing safe operation of the forklift.



High Quality Tyres

Industrial tyres with a wide footprint giving it greater stability and lift capacity in rough work environments.



Upward Steering Cylinder (Compact 4WD)

Lay the steering cylinder upward to make the turning radius smaller and rear wheel steering angle bigger.



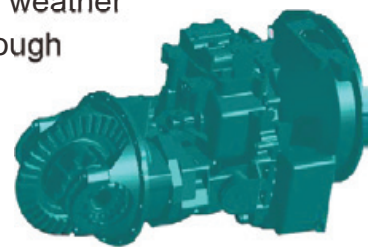
High Ground Clearance

Offer greater maneuverability and keep the machine moving in the roughest of applications.



100% Differential Lock (2WD)

Power shift transmission with jaw type 100% differential lock provides ultimate traction during inclement weather conditions and rough operating surfaces.



Tilting Overhead Guard (4WD)

Equipped as standard with a tilting overhead guard, to ensure easy access to major components for inspection and service.



Our Solution, Your Decision

		2WD				
		1.8T	2.5T	3.5T	4T	5T
Body	YES <input checked="" type="radio"/> / NO <input type="radio"/>					
	Floated Overhead Guard	<input type="radio"/>				
	4WD-2WD Rocker Switch	—				
	Industrial Tyres (F/R)	<input checked="" type="radio"/> / <input type="radio"/>	<input checked="" type="radio"/> / <input type="radio"/>	<input checked="" type="radio"/> / <input type="radio"/>	<input checked="" type="radio"/> / <input checked="" type="radio"/>	<input checked="" type="radio"/> / <input checked="" type="radio"/>
	Suspension Pedal	<input type="radio"/>				
	Truck Width (mm)	1450	1557.5	1600	2067	2067
	Loaded into 20GP Container	<input checked="" type="radio"/>	<input checked="" type="radio"/>	<input type="radio"/> (Deflate the tyres)	<input type="radio"/>	<input type="radio"/>
	External Type Steering Cylinder	<input type="radio"/>				
	With Prefilter	<input checked="" type="radio"/>				
	LED Lights	Standard				
	Safety Start System*	Standard				
	Suspension Seat	Option				
	OPS system	Option				
	Performance	Engine	YANMAR 4TNE98/MITSUBISHI S4S	YANMAR 4TNE98	Perkins 1104C-44TA/1104D-44TA	
Gradeability		20%	20%	16%	30%	
Gradient		11.3°	11.3°	9°	16.7°	
Min.Turning Radius(mm)		2840	2870	2870	3550	
Transmission Model		Hydraulic				
Differential Lock Type		Jaw Type Differential Lock				
Differential Ratio		100%				

Safety Start System* The truck can't start if any below: 1-operator leaves the seat, 2-seatbelt unfastened, 3-hand brake released, 4-not in N position.



Compact 4WD			4WD	
1.8T	2.5T	3.5T	2.5T	3.5T
	○			○
	○			○
○ / ○	○ / ○	○ / ○	○ / ○	○ / ○
	○			○
1450	1450	1600	1980	1980
○ (Deflate the tyres)	●	●	●	●
	○			○
	○			○
	Standard			Standard
	Standard			Standard
	Option			Standard
	Option			Option
YANMAR 4TNE98/	mitsubishi S4S	YANMAR 4TNE98	YANMAR 4TNE98	
80%/60%	50%	45%	38%	38%
38.6°/31°	26.5°	24.2°	20.8°	20.8°
3120	3120	3120	4275	4295
	Hydraulic		Hydrostatic	
	Limited Slip Differential Lock		Limited Slip Differential Lock	
	45%		45%	

Forklift Specification

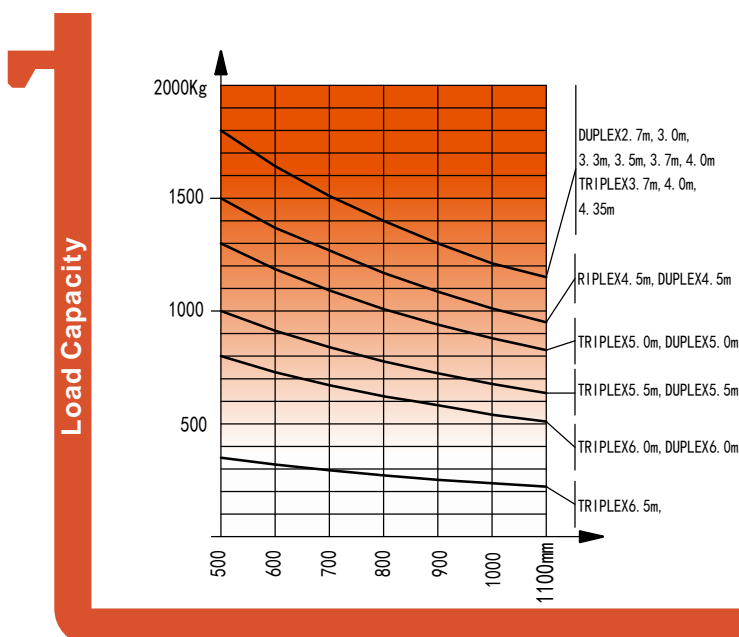
2WD 1.8T/2.5T/3.5T									
General	1	Model		2WD	2WD	2WD			
	2	Power type		FD18RT	FD25RT	FD35RT			
	3	Rated capacity		Diesel					
	4	Load centre		Kg	1800	2500	3500		
Characteristic&Dimension	5	Lifting height		mm	500				
	6	Height		mm	105	160	165		
	7	Fork size	L×W×T	mm	1070×100×35	1070×122×40	1220×122×45		
	8	Fork regulating range	Min./Max.	mm	200-1000	250-1160	250-1160		
	9	Mast tilt angle	F/R	Deg	10/12				
	10	Front overhang		mm	509	586	601		
	11	Rear overhang		mm	520	520	520		
	12	Min. ground clearance(drive steer axle)		mm	255	270	270		
	13	Overall dimensions	Length to face of fork (without fork)		mm	2990	2946	2956	
	14		Overall width		mm	1450	1557.5	1600.5	
	15		Mast lowered height		mm	2148	2265	2330	
	16		Mast extended height (with backrest)		mm	4170	4175	4305	
	17		Overhead guard height		mm	2260	2256.5	2276	
	18	Turning radius		mm	2840	2870	2870		
	19	Min. right angle stacking aisle width	Pallet size a ₁₂ =1000,b ₁₂ =1200		mm	4760	4860	4870	
			Pallet size a ₁₂ =1200,b ₁₂ =800		mm	4360	4460	4470	
	Performance	20	Speed	Travel(Laden/Unladen)		Km/h	20/18	20/18	22/22
				Lifting(Laden)		mm	610	600	450
				Lowering(Laden)		mm	450	445	500
23		Max. Drawbar pull(Laden)		KN	13	17	17		
24		Max. Gradeability(Laden)		%	20	20	16		
Tyre	25	Tyre	Front			12-16.5-12PR	12-16.5-12PR	14-17.5-14PR	
			Rear			27×10-12-12PR	27×10-12-12PR	27×10-12-12PR	
	27	Tread	Front		mm	1123	1250.5	1250.5	
			Rear		mm		1205		
	29	Wheelbase		mm	1880				
Weight	30		Self weight		kg	3960	4465	5180	
	31	Weight Distribution	Laden	Front axle		kg	4954	5990	7725
				Rear axle		kg	806	975	955
			Unladen	Front axle		kg	1584	1785	2070
				Rear axle		kg	2376	2680	3110
35	Battery	Voltage/Capacity		V/Ah	12/90	12/90	12/90		
Power&Transmission	36	Model		4TNE98-BQFLC					
	37	Manufacture		YANMAR					
	38	Rated output/r.p.m.		Kw	42.1/2300				
	39	Rated torque/r.p.m.		N.m	196.3/1700				
	40	No. of cylinder		4					
	41	Bore×Stroke		mm	98×110				
	42	Displacement		L	3.318				
	43	Fuel tank capacity		L	55				
	44	Manufacture		China					
	45	Transmission	Type			Powershift	Powershift	Powershift	
46	Stage		F/R		1/1	1/1	1/1		
47	Operating pressure		Mpa	16.5	20	20			

Compact 4WD 1.8T/2.5T/3.5T

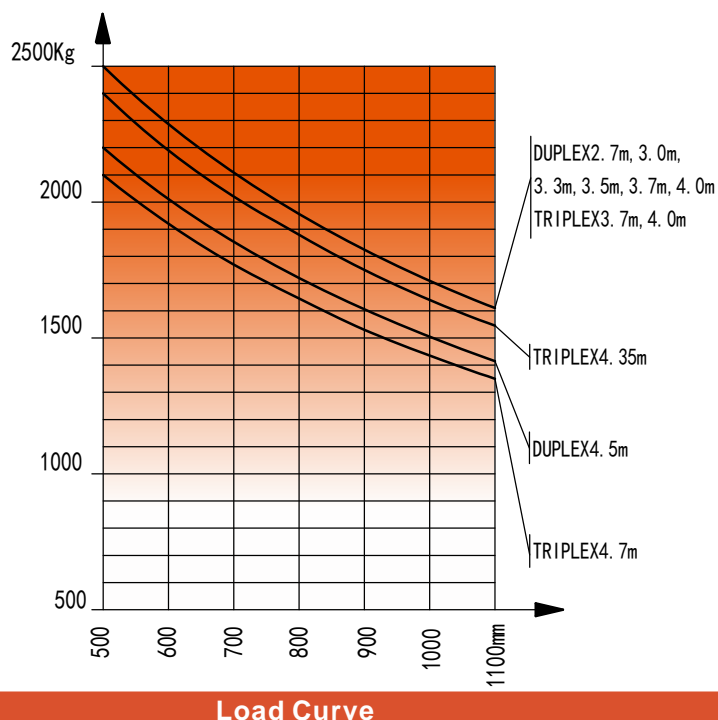
General				FD18RT	FD25RT	FD18RT	FD25RT	FD35RT	
1	Model			FD18RT	FD25RT	FD18RT	FD25RT	FD35RT	
2	Power type			Diesel					
3	Rated capacity		Kg	1800	2500	1800	2500	3500	
4	Load centre		mm	500	500	500	500	500	
5	Lifting height		mm	3000	3000	3000	3000	3000	
6	Free lift		mm	105	160	105	160	165	
7	Fork size	L×W×T	mm	1070×100×35	1070×122×40	1070×100×35	1070×122×40	1220×122×45	
8	Fork regulating range	Min./Max.	mm	200-1315	250-1310	200-1315	250-1310	250-1500	
9	Mast tilt angle	F/R	Deg	10/12					
10	Front overhang		mm	520	586	520	586	601	
11	Rear overhang		mm	600					
12	Min.ground clearance(drive steering axle)		mm	219					
13	Min.ground clearance(chassis) (Unladen/Laden)		mm	230/215	230/215	230/215	230/215	224/230	
14	Min.ground clearance(mast) (Unladen/Laden)		mm	275/250	270/255	275/250	270/255	270/250	
15	Ground clearance (drawbar pin)		mm	354.5	354.5	354.5	354.5	430	
16	Height from seat surface to overhead guard inner side		mm	990	990	990	990	1043	
17-21	Overall dimensions	Length to face of fork (without fork)	mm	3000	3066	3000	3066	3081	
		Overall width	mm	1450	1450	1450	1450	1600	
		Mast lowered height	mm	2145	2235	2145	2235	2330	
		Mast extended height (with backrest)	mm	4140	4175	4140	4175	4305	
		Overhead guard height	mm	2256	2256	2256	2256	2276	
22	Turning radius		mm	3120	3120	3120	3120	3120	
23-24	Min. right angle stacking aisle width	Pallet size a ₁₂ =1000,b ₁₂ =1200	mm	4629	4706	4629	4706	4921	
		Pallet size a ₁₂ =1200,b ₁₂ =800	mm	4829	4906	4829	4906	4871	
25	Min. right angle stacking aisle width(pallet size a ₁₂ =1200,b ₁₂ =1200)		mm	2670		2670		2725	
26-31	Speed	Travel(Unladen/Laden)	Km/h	18/17	18/17	20/19	20/19	19/18	
		Lifting(Unladen/Laden)	mm	620/590	620/570	640/610	650/600	510/485	
		Lowering(Unladen/Laden)	mm	420/450	510/450	420/450	510/450	500/450	
	Max. Drawbar pull		KN	31	38	38	38	38	
	Max. Gradeability		%	60	50	80	50	45	
31	Braking distance		m	≤6		≤6		≤6	
32-39	Tyre	Front		12-16.5-12PR		12-16.5-12PR		14-17.5L-14PR	
		Rear		10.0/75-15.3		10.0/75-15.3		10.0/75-15.3	
	Tyre pressure(Front/Rear)		Mpa	0.62/0.55		0.62/0.55		0.55/0.55	
	Tread	Front	mm	1123		1123		1250	
		Rear	mm	1190		1190		1190	
	Ground clearance (Front tyre centre)(Unladen/Laden)		mm	405.5/385		405.5/385		450.5/425	
	Ground clearance (Rear tyre centre)(Unladen/Laden)		mm	370/350		370/350		370/385	
Wheelbase		mm	1880		1880		1880		
40-44	Self weight		kg	4255	4830	4255	4830	5545	
	Weight Distribution	Laden	Front axle	kg	4602	6597	4602	6597	7872
			Rear axle	kg	1453	733	1453	733	1073
		Unladen	Front axle	kg	1702	2173	1702	2173	2345
			Rear axle	kg	2553	2657	2553	2657	3100
45	Battery	Voltage/Capacity		V/Ah		12/90			
46-57	Engine	Model		S4S		4TNE98-BQFLC			
		Manufacture		MITSUBISHI		YANMAR			
		Rated output/r.p.m.		Kw	35.3/2250		42.1/2300		
		Rated torque/r.p.m.		N.m	182/1800		196.3/1700		
		No. of cylinder			4		4		
		Bore×Stroke		mm	94×120		98×110		
		Displacement		L	3.331		3.318		
		Fuel tank capacity		L			55		
54-56	Transmission	Manufacture		China		China			
		Type		Powershift		Powershift			
		Stage	F/R	2/1		2/1			
57	Operating pressure		Mpa	16.5	20	16.5	20	20	

Mast Specification

Type	Model	Max. fork height	Overall height			Free lift					
			Lowered			With backrest			Without backrest		
			1.8T	2.5T	3.5T	1.8T	2.5T	3.5T	1.8T	2.5T	3.5T
mm	mm	mm	mm	mm	mm	mm	mm	mm	mm		
wide view 2-stage mast	M270	2700	1998	2085	2180	105	160	165	105	160	165
	M300	3000	2148	2235	2330	105	160	165	105	160	165
	M330	3300	2298	2385	2480	105	160	165	105	160	165
	M350	3500	2398	2485	2580	105	160	165	105	160	165
	M370	3700	2498	2585	2680	105	160	165	105	160	165
	M400	4000	2698	2785	2880	105	160	165	105	160	165
	M450	4500	2948	3035	3130	105	160	165	105	160	165
	M500	5000	3198	---	---	105	---	---	105	---	---
	M550	5500	3498	---	---	105	---	---	105	---	---
	M600	6000	3748	---	---	105	---	---	105	---	---
Full free 3-stage mast	TFM360	3600	1908	---	---	725	---	---	1105	---	---
	TFM370	3700	---	1990	2115	---	798	790	---	1243	1246
	TFM400	4000	2033	2080	2205	850	888	890	1230	1333	1336
	TFM435	4350	2158	2205	2330	980	1013	1015	1360	1458	1461
	TFM450	4500	2208	---	---	1030	---	---	1410	---	---
	TFM470	4700	---	2320	2445	---	1128	1130	---	1573	1576
	TFM480	4800	2308	---	---	1130	---	---	1510	---	---
	TFM500	5000	2408	2455	2580	1230	1263	1265	1610	1708	1710
	TFM550	5500	2573	2620	2745	1390	1428	1430	1770	1873	1875
	TFM600	6000	2758	2805	2930	1580	1613	1615	1960	2058	2060
TFM650	6500	2973	3020	3145	1790	1828	1830	2180	2273	2275	

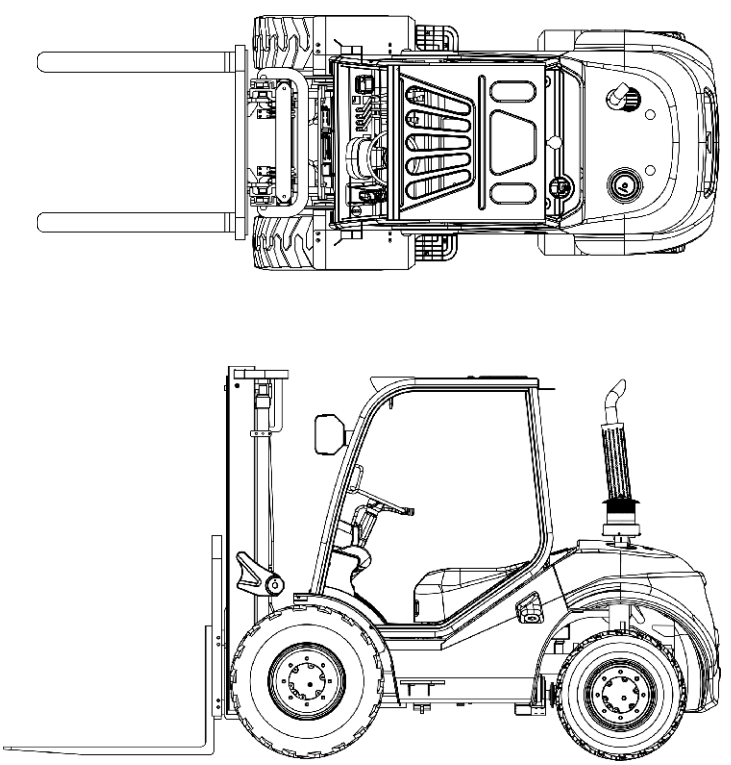
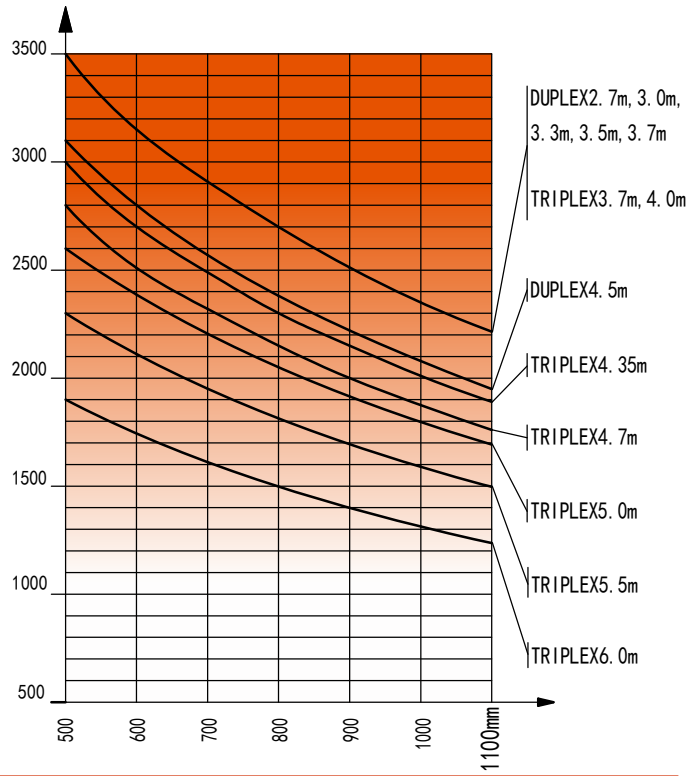


1.8T Load Chart



2.5T Load Chart

Front Overhang			Tilt range		Capacity at max. height					
					Load Center 500mm					
1.8T	2.5T	3.5T	FWD	BWD	Without side shift carriage			With side shift carriage		
					1.8T	2.5T	3.5T	1.8T	2.5T	3.5T
mm	mm	mm	Deg	Deg	kg	kg	kg	kg	kg	kg
509	585	600	10°	12°	1800	2500	3500	1800	2500	3200
509	585	600	10°	12°	1800	2500	3500	1800	2500	3200
509	585	600	10°	12°	1800	2500	3500	1800	2500	3200
509	585	600	10°	12°	1800	2500	3500	1800	2500	3200
509	585	600	10°	12°	1800	2500	3500	1800	2500	3200
509	585	600	10°	12°	1800	2500	3400	1800	2500	3100
509	585	600	10°	12°	1500	2200	3100	1400	2100	2900
509	---	---	6°	6°	1300	---	---	1200	---	---
509	---	---	6°	6°	1000	---	---	900	---	---
509	---	---	6°	6°	800	---	---	400	---	---
509	---	---	10°	12°	1800	---	---	1800	---	---
---	590	620	---	---	---	2500	3500	---	2400	3100
509	590	620	10°	12°	1800	2500	3400	1800	2400	3100
509	590	620	10°	12°	1800	2400	3000	1600	2200	2900
509	---	---	10°	12°	1500	---	---	1400	---	---
---	590	620	---	---	---	2100	2800	---	1900	2500
509	---	---	10°	12°	1400	---	---	1300	---	---
509	590	620	6°	6°	1300	1900	2600	1200	1600	2300
509	590	620	6°	6°	1000	1500	2300	900	1200	2100
509	590	620	6°	6°	800	1200	1900	400	800	1600
509	590	620	6°	6°	350	700	1300	200	400	1100



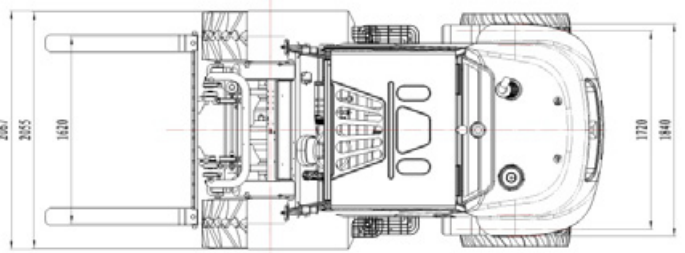
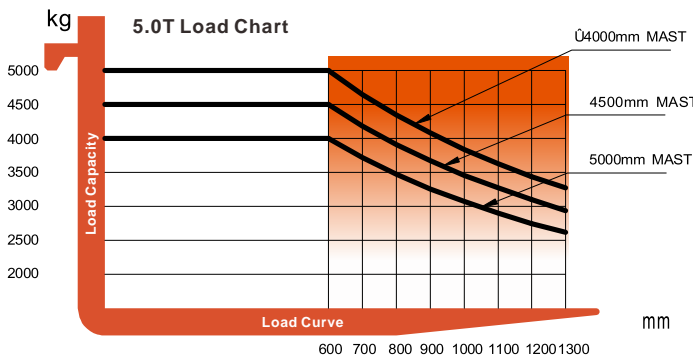
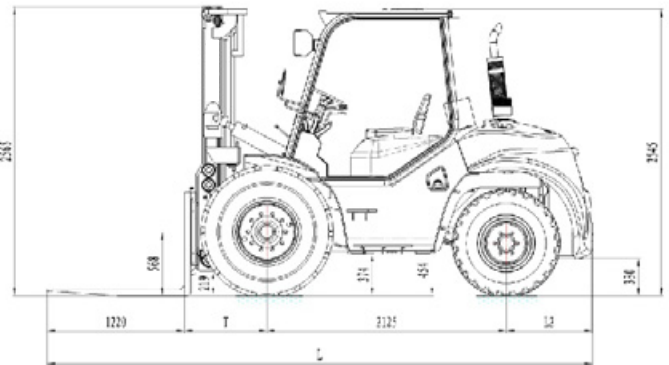
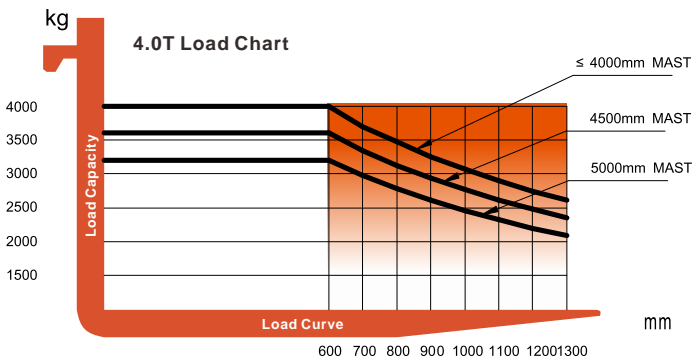
3.5T Load Chart

Forklift Specification

2WD 4T/5T						
General	1	Model		FD40RT	FD50RT	
	2	Power type		Diesel	Diesel	
	3	Rated capacity	Kg	4000	5000	
	4	Load centre	mm	600	600	
Characteristic&Dimension	5	Lifting height		3000	3000	
	6	Free lift height		145	145	
	7	Fork size	L×W×T	1220*150*50	1220*150*55	
	8	Fork regulating range	Min./Max.	300/1954	300/1954	
	9	Mast tilting range	F/R	15°/15°	15°/15°	
	10	Front overhang		732	732	
	11	Rear overhang		764	764	
	12	Ground clearance	Middle of frame(Unladen/Laden)	374/354	374/354	
	13		Bottom of mast(Unladen/Laden)	320/320	320/320	
	14	Overall dimensions	Length to face of fork(without fork)	3622	3622	
	15		Overall length(with fork)	4837	4837	
	16		Wheel width	2055	2055	
	17		Frame width	2067	2067	
	18		Mast lowered height	2565	2565	
	19		Mast extended height(with backrest)	4170	4170	
20	Overhead guard height		2545	2545		
21	Min. turning radius		3550	3550		
Performance	22	Speed	Travel(Unladen/Laden)	Km/h	22/21	
	23		Lifting(Unladen/Laden)	mm/s	570/500	
	24	Pressure	Laden lifting(normal/max)	Mpa	15.6/19	
	25		Unladen lifting(normal/max)	Mpa	2.6/19	
	26		Laden tilting(normal/max)	Mpa	front 1;rear 12/front 19; rear 19	
	27	Max. Drawbar pull(Laden/unladen)		KN	50	50
28	Gradeability(Laden/unladen)		%	30	30	
Tyre	29	Tyre	Front	445-65-22.5PR/1175	445-65-22.5PR/1175	
	30		Rear	12.5/80-18/958	12.5/80-18/958	
	30	Tread	Front	mm	1620	
	31		Rear	mm	1720	
31	Wheelbase		mm	2125	2125	
Weight	32	Self weight		kg	7960	8450
	33	Braking distance		m	≤6	≤6
Power&Transmission	34	Engine	Model		1104C-44T	1104C-44T
	35		Manufacture		PERKINS	PERKINS
	36		Rated output/r.p.m.	Kw	74.5/2300	74.5/2300
	37		Rated torque/r.p.m.	N.m	415/1350	415/1350
	38		No. of cylinder		4	4
	39		Bore×Stroke	mm	105×127	105×127
	40		Displacement	L	4.4	4.4
	41	Manufacture		China	China	
	42	Transmission	Type		Powershift	Powershift
	43		Stage	F/R	2/1	2/1

Mast Specification

Type	Model	Max. fork height	Overall height Lowered	Free lift		Front Overhang		Tilt range		Capacity			
				With backrest	Without backrest	4.0T	5.0T	FWD	BWD	capacity at max. height			
										Without side shift carriage		With side shift carriage	
										4.0T	5.0T	4.0T	5.0T
mm	mm	mm	mm	mm	mm	Deg	Deg	kg	kg	kg	kg		
wide view 2-stage mast	M300	3000	2565	145	145	727	732	15	15	4000	5000	3600	4700
	M330	3300	2715	145	145	727	732	15	15	4000	5000	3600	4700
	M350	3500	2815	145	145	727	732	15	15	4000	5000	3600	4700
	M370	3700	2915	145	145	727	732	15	15	4000	5000	3600	4700
	M400	4000	3115	145	145	727	732	15	15	4000	5000	3600	4700
	M450	4500	3365	145	145	727	732	15	15	3600	4500	3240	4050
	M500	5000	3615	145	145	727	732	15	15	3200	4000	2800	3600
Full free 3-stage mast	TFM400	4000	2560	1000	1350	760	765	15	15	4000	5000	3600	4500
	TFM435	4350	2685	1125	1475	760	765	15	15	3600	4500	3240	4050
	TFM450	4500	2736	1176	1526	760	765	15	15	3200	4000	2880	3600
	TFM470	4700	2802	1242	1592	760	765	15	15	2950	3700	2680	3350
	TFM500	5000	2935	1375	1725	760	765	10	15	2640	3300	2360	2950
	TFM540	5400	3060	1500	1850	760	765	10	15	1920	2400	1720	2150
	TFM600	6000	3300	1740	2090	760	765	10	15	1600	2000	1400	1800

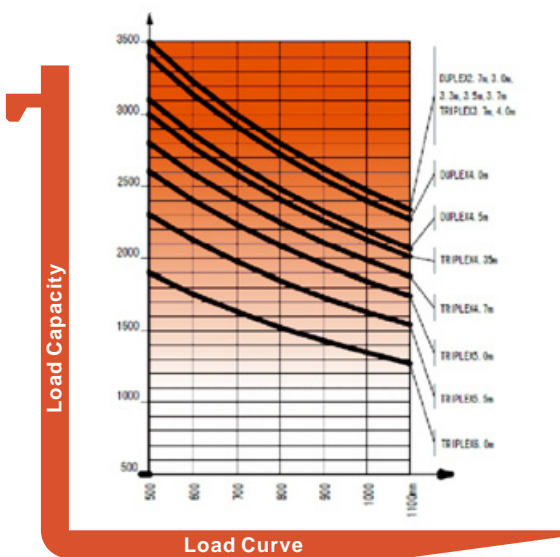
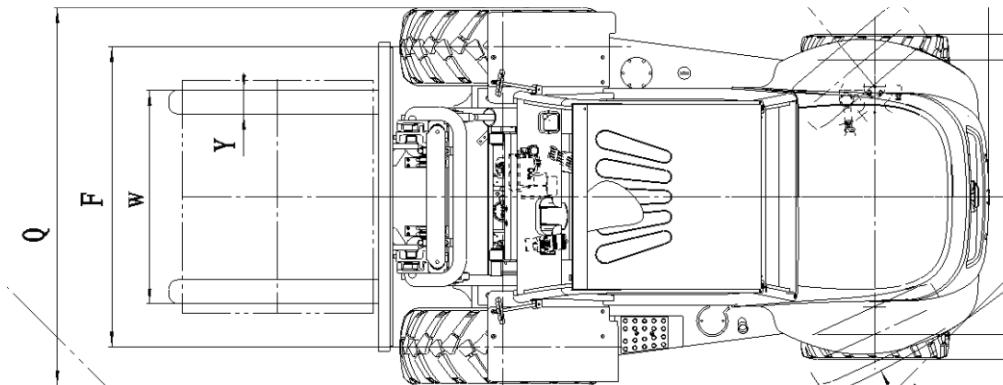


Forklift Specification

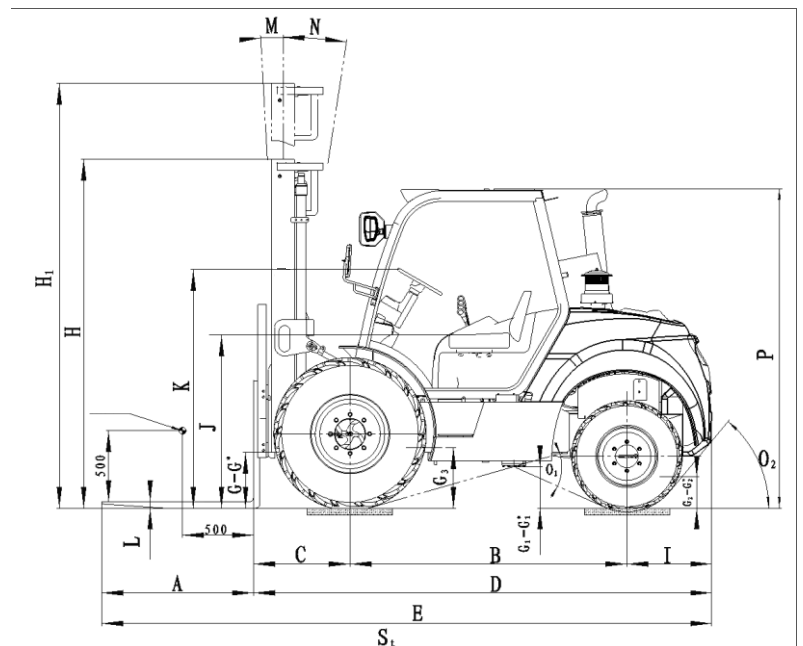
4WD 2.5T/3.5T								
General	1	Model			FD25RT	FD35RT		
	2	Power type			diesel	diesel		
	3	Rated capacity			Kg	2500	3500	
	4	Load centre			mm	500	500	
Characteristic&Dimension	5	Lift height			mm	3000	3000	
	6	Free lift height			mm	160	165	
	7	Fork size	L×W×T		mm	1070×125×40	1220×125×45	
	8	Fork regulating range	Min./Max.		mm	250-1560	250-1560	
	9	Mast tilt range	F/R		Deg	10/12	10/12	
	10	Front overhang			mm	680	680	
	11	Rear overhang			mm	590	597	
	12	Min. ground clearance			mm	394.5	410	
	13	Overall dimensions	Length to face of fork (without fork)		mm	3182	3227	
	14		Overall width		mm	1980	1980	
	15		Mast lowered height		mm	2454	2470	
	16		Mast extended height (with backrest)		mm	4270	4400	
	17		Overhead guard height		mm	2250	2250	
	18	Min. turning radius			mm	4275	4295	
19	Min. right angle stacking aisle width(add load length and clearance)			mm	8375	8395		
Performance	20	Speed	Travel(Unladen)		Km/h	20	20	
	21		Lifting(Laden)		mm/s	540	450	
	22		Lowering(Laden)		mm/s	630	540	
	23	Max. Drawbar pull(Laden/unladen)			KN	34.3	34.3	
	24	Max. Gradeability(Loaden)			%	38	38	
Tyre	25	Tyre	Front			405/70-20-14PR	405/70-20TL	
			Rear			10.0/75-15.3-14PR	10.0/75-15.3	
	26	Tread	Front		mm	1570	1570	
			Rear		mm	1440	1440	
27	Wheelbase			mm	1950	1950		
Weight	28	Self weight			kg	4900	5750	
	29	Weight Distribution	Laden	Front axle		kg	6290	7990
	30			Rear axle		kg	1110	1260
	31		Unladen	Front axle		kg	2265	2450
	32			Rear axle		kg	2635	3300
Power&Transmission	33	Battery	Voltage/Capacity		V/Ah	12/90		
	34	Engine	Model				4TNE98-BQFLC	
	35		Manufacture				YANMAR	
	36		Rated output/r.p.m.			Kw	42.1/2300	
	37		Rated torque/r.p.m.			N.m	196.3/1700	
	38		No. of cylinder				4	
	39		Bore×Stroke			mm	98×110	
	40		Displacement			L	3.319	
	41		Fuel tank capacity			L	3.319	
	42	Transmission	Manufacture				DANA	
	43		Type	Front axle			112	
	44			Rear axle			211	
	45			Transfer case			311	
	46		Stage	F/R			1/1	
47	Static system pressure			Mpa	40			
48	Operating pressure(For attachments)			Mpa	20			
49	Min. right angle stacking aisle width			mm	2980	3000		

Mast Specification

Type	Model	Overall height		Free lift				Front Overhang		Tilt range		Capacity			
		Lowered		With backrest		Without backrest		2.5T	3.5T	FWD	BWD	capacity at max. height			
		2.5T	3.5T	2.5T	3.5T	2.5T	3.5T					Without side shift carriage		With side shift carriage	
		mm	mm	mm	mm	mm	mm	mm	mm	Deg	Deg	2.5T	3.5T	2.5T	3.5T
wide view 2-stage mast	M270	2320	2320	165	165	165	165	700	700	10	12	3500	3500	3200	3200
	M300	2470	2470	165	165	165	165	700	700	10	12	3500	3500	3200	3200
	M330	2620	2620	165	165	165	165	700	700	10	12	3500	3500	3200	3200
	M350	2720	2720	165	165	165	165	700	700	10	12	3500	3500	3200	3200
	M370	2820	2820	165	165	165	165	700	700	10	12	3500	3500	3200	3200
	M400	3020	3020	165	165	165	165	700	700	10	12	3400	3400	3100	3100
	M450	3270	3270	165	165	165	165	700	700	10	12	3100	3100	2900	2900
Full free 3-stage mast	TFM370	2255	2255	798	798	1243	1243	700	700	10	12	3500	3500	3100	3100
	TFM400	2345	2345	888	888	1333	1333	700	700	10	12	3500	3500	3100	3100
	TFM435	2470	2470	1013	1013	1458	1458	700	700	10	12	3000	3000	2900	2900
	TFM470	2605	2605	1128	1128	1573	1573	700	700	10	12	2800	2800	2500	2500
	TFM500	2720	2720	1263	1263	1708	1708	700	700	6	6	2800	2800	2500	2500
	TFM550	2885	2885	1428	1428	1873	1873	700	700	6	6	2500	2500	2300	2300
	TFM600	3070	3070	1613	1613	2058	2058	700	700	6	6	2100	2100	1800	1800



3.5T Load Chart



Nexen Lift Trucks

Address Nexen Lift Trucks,
Riverside Road,
Lowestoft,
Suffolk, NR33 0TU
United Kingdom

Tel 01502 532211
Website www.nexenlifttrucks.com
Email info@nexenlifttrucks.com



All rights reserved.
Any doubt, please contact us.